



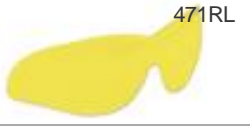






**Product Family**  
**Lightning and Lightning Plus Series**

Choose from the semi-framed Lightning, or the frameless Lightning Plus. Both offer full-view unilens construction. Interchangeable lenses attach to temples that provide a secure fit. Prescription insert simplifies your safety program, allowing use by your entire workforce.



**Product Numbers & Ordering Information**

Product Numbers	Details
 <p>469RL</p>	<p><b>Lightning Plus Replacement Lens</b>                      Clear Lens, North 4A Coating: Anti-Fog, Anti-Scratch, Anti-UV 99.9%, Anti-Static</p>
 <p>470RL</p>	<p><b>Lightning Plus Replacement Lens</b>                      Smoke Lens, North 4A Coating: Anti-Fog, Anti-Scratch, Anti-UV 99.9%, Anti-Static</p>
 <p>471RL</p>	<p><b>Lightning Plus Replacement Lens</b>                      Amber Lens, North 4A Coating: Anti-Fog, Anti-Scratch, Anti-UV 99.9%, Anti-Static</p>
 <p>472RL</p>	<p><b>Lightning Plus Replacement Lens</b>                      Mirror Lens, Anti-Scratch, Anti-UV 99.9%, Anti-Static</p>
 <p>489HRL</p>	<p><b>Lightning Plus Replacement Lens</b>                      Indoor/Outdoor Lens, Anti-Scratch, Anti-UV 99.9%, Anti-Static</p>
 <p>T65005</p>	<p><b>Black Frame</b>                      Clear Lens, North 4A Coating: Anti-Fog, Anti-Scratch, Anti-UV 99.9%, Anti-Static</p>
 <p>T65005A</p>	<p><b>Black Frame</b>                      Amber Lens, North 4A Coating: Anti-Fog, Anti-Scratch, Anti-UV 99.9%, Anti-Static</p>

## Lightning and Lightning Plus Series



T65005R

### **Black Frame**

Mirror Lens, Anti-Scratch, Anti-UV 99.9%, Anti-Static



T65005S

### **Black Frame**

Smoke Lens, North 4A Coating: Anti-Fog, Anti-Scratch, Anti-UV 99.9%, Anti-Static



T65005TCG

### **Black Frame**

Indoor/Outdoor Lens, Anti-Scratch, Anti-UV 99.9%, Anti-Static



T65505B

### **Black Frame**

Clear Lens, North 4A Coating: Anti-Fog, Anti-Scratch, Anti-UV 99.9%, Anti-Static



T65505BA

### **Black Frame**

Amber Lens, North 4A Coating: Anti-Fog, Anti-Scratch, Anti-UV 99.9%, Anti-Static



T65505BL

### **Blue Frame**

Clear Lens, North 4A Coating: Anti-Fog, Anti-Scratch, Anti-UV 99.9%, Anti-Static



T65505BLS

### **Blue Frame**

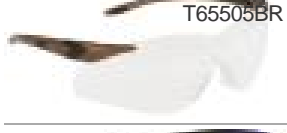
Smoke Lens, North 4A Coating: Anti-Fog, Anti-Scratch, Anti-UV 99.9%, Anti-Static



T65505P

### **Black Frame**

Mirror Lens, Anti-Scratch, Anti-UV 99.9%, Anti-Static



T65505BR

### **Bronze Frame**

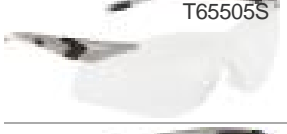
Clear Lens, North 4A Coating: Anti-Fog, Anti-Scratch, Anti-UV 99.9%, Anti-Static



T65505F

### **Black Frame**

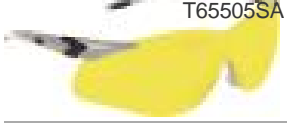
Smoke Lens, North 4A Coating: Anti-Fog, Anti-Scratch, Anti-UV 99.9%, Anti-Static



T65505S

### **Silver Frame**

Clear Lens, North 4A Coating: Anti-Fog, Anti-Scratch, Anti-UV 99.9%, Anti-Static



T65505SA

### **Silver Frame**

Amber Lens, North 4A Coating: Anti-Fog, Anti-Scratch, Anti-UV 99.9%, Anti-Static



T65505SM

### **Silver Frame**

Mirror Lens, Anti-Scratch, Anti-UV 99.9%, Anti-Static



T65506SS

**Silver Frame**

Smoke Lens, North 4A Coating: Anti-Fog, Anti-Scratch, Anti-UV 99.9%, Anti-Static



T65515BTCG

**Black Frame**

Indoor/Outdoor Lens, Anti-Scratch, Anti-UV 99.9%, Anti-Static

## Overview

### Key Features

Choose from the semi-framed Lightning, or the frameless Lightning Plus. Both offer full-view unilens construction. Interchangeable lenses attach to temples that provide a secure fit. Prescription insert simplifies your safety program, allowing use by your entire workforce.

### Recommended Industries/Use

- Construction
- Forestry
- Manufacturing
- Oil and Gas
- Pharmaceutical
- Steel and Metals
- Utilities

### Hazards

- Impact

### Regulations

- Test certifications - Meets ANSI Z87.1-2010 and CSA Z94.3 2015

## Specifications

### Available Frame Colors

- Black, Blue, Silver, Bronze

### Available Lens Tints

- Clear, Smoke, Amber, Mirror, I/O Mirror

### Harmonization Code

- 9004.90.0000

### Lens Coating

- 4A, 3A

### Lens Type

- Uni-lens

### MSDS Requirements

- None

### Range

- Spectacle

### Replacement Lenses Available (Yes/No)

- Yes

### Rx Capable

- Insert

### Side Shield Material

- N/A

### WHIMS Requirements

- None

## Additional Information

Americas: [information@honeywell.com](mailto:information@honeywell.com); 800-430-4110

## Technical Support

Americas: [information@honeywell.com](mailto:information@honeywell.com); 800-430-4110

© Honeywell International Inc.